

FV55N-24

VIRTUE SERIES

FIXED DAY & NIGHT CAMERA
WIDELUX, 2D/3DNR



KEY FEATURES

- 1/3 inch Sony Super HAD II CCD
- WideLux
- Wide Dynamic Range (WDR)
- 2D/3D Noise Reduction (2D/3DNR)
- Highlight Suppression Compensation (HSC)
- Digital Image Stabilizer [DIS]
- Digital Slow Shutter [DSS]
- Day & Night
- Motion Detection
- Min illumination 0.1 lux ~ 0.0001 lux
- Non-polarity power input
- 12V DC / 24V AC



FEATURES IMAGES

WIDELUX

WideLux WDR provides special intelligent solutions and analyzes the exposure ratio and optimizes to reach a superior image quality.



Conventional WDR



WideLux WDR

DAY & NIGHT

It enables the camera to produce very natural colors during the day and greatly improve the sensitivity and resolution by converting the image to B/W during the night.



Day



Night

2D/3DNR (3D Noise Reduction)

2D/3DNR is another reference with WideLux WDR Technology. Produces noiseless image with 2D/3D filtering Noise Reduction Technology so that user can save the volume of storage media and HDD capacity in DVR.



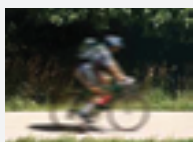
Normal Camera



3DNR Camera

DIS (Digital Image Stabilizer)

This technology reduces motion blur by using pixel outside the border of the visible frame to provide a buffer for the motion. Increasing the exposure time without blurring the image makes the moving subject stabilized digitally.



Conventional



DIS

TECHNICAL SPECIFICATIONS

Resolution	650 TV Lines (Color) / 700 TV Lines (B/W)
Image Sensor	1/3" SONY Super HAD II CCD
Scanning System	2:1 Interlace
Effective Pixel	NTSC: 768 (h) x 494 (v) PAL: 752 (h) x 582 (v)
Min. Illumination	0.1Lux~0.0001Lux (IR ON)
Electronic Shutter	NTSC: 1/60~100,000 sec. PAL: 1/50~1/100,000 sec.
Lens Type	C/CS mount
S/N Ratio	≥52 dB (AGC Off)
Video Output	1.0Vp-p Composite. 75Ω
Gamma Correction	-
Frequency	H: 15.734KHz V: 59.94Hz (NTSC) H: 15.625KHz V: 50.00Hz (PAL)
Synchronization	Internal
IR LED No	No
IR Visibility Range	No
IR Cut Filter	No
Power Supply	DC12V, AC24V
Power Consumption	200mA at 12V DC / 90mA at 24V AC
Work Humidity	Within 90% RH
Operation Temperature	14°F ~ 122°F (-10°C ~ +50°C)
Lens Mount Type	C/CS mount
Dimension (w x h x l)	62mm x 56mm x 127mm
Weight	510g

OSD MENU

Wide Dynamic Range [WDR]	Off / On [User selectable by OSD]
Highlight Supp. Compensation	Yes
Digital Noise Reduction [DNR]	Off /On [User selectable by OSD]
Digital Image Stabilizer [DIS]	Yes
Digital Slow Shutter [DSS]	Off / 2x ~ 512x
Gain Control	Standard: 6dB ~ 34dB, Auto / Maximum by OSD
Back Light Compensation [BLC]	Yes
White Balance	Auto ATW / Push Lock / User Selectable
Motion Detection	On / Off [8 Zone setting available]
Digital Zoom	Off, X1 ~ X6
Privacy Masking	Off / On [8 Zone setting available]